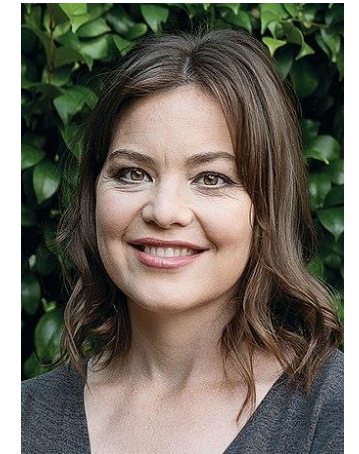




From moratorium to major cycle routes

A potted 21st century history of cycling in Christchurch

Content



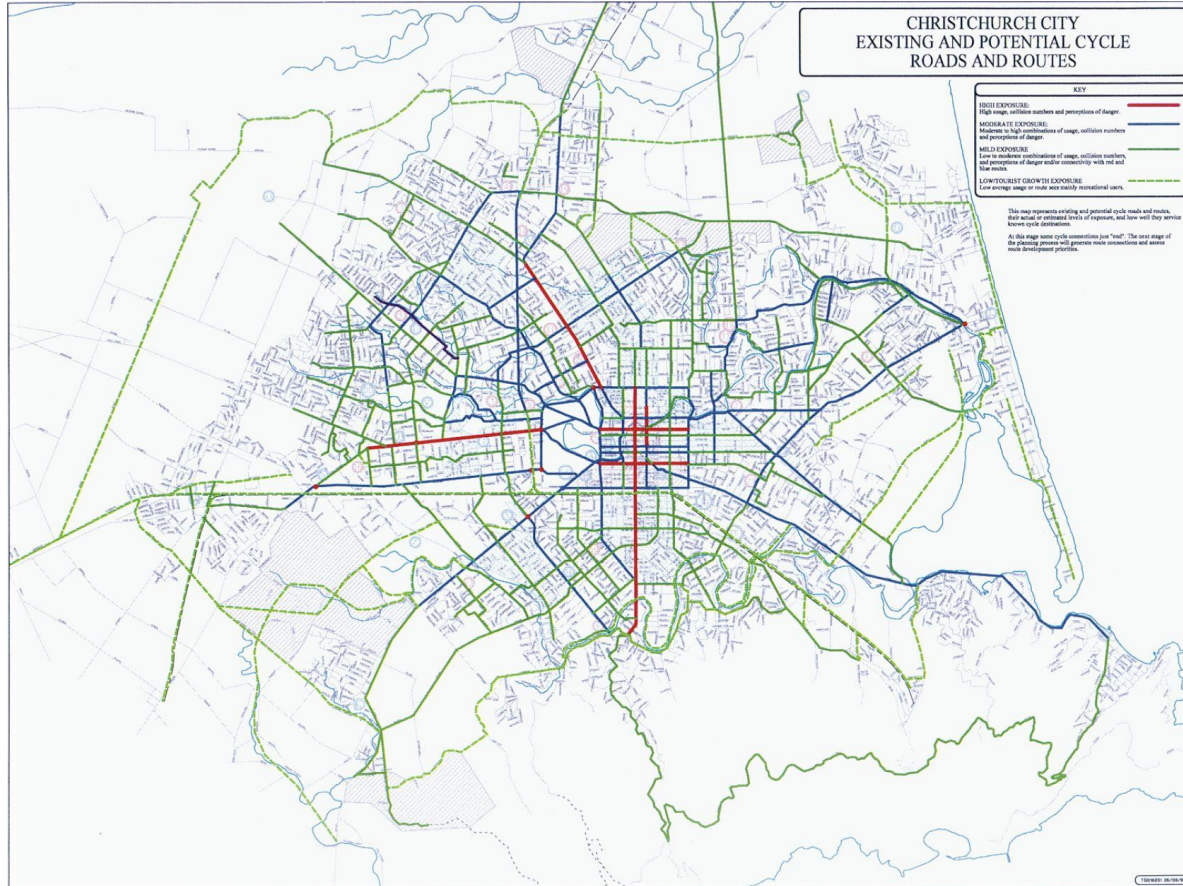
Christchurch City Council

- At Christchurch City Council (CCC) since 1998
 - Alix Newman – cycle planner
 - Me – traffic engineer
- Cycling catered for via CCC projects
whether → how



2000 Christchurch cycling strategy

Proposed network plan



- Previous work had focused on providing for cycling on backstreets
- Counts showed that most cycling happened on busier roads
 - more direct etc

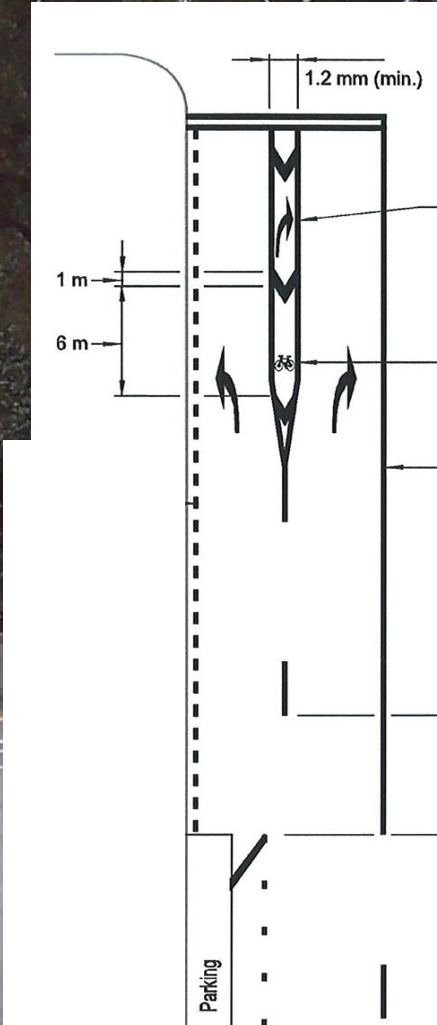
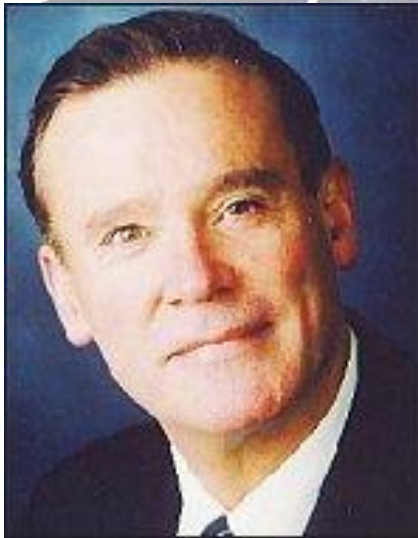
Christchurch CC, the innovator

- In early 2000s, much traffic engineering innovation came from Christchurch City
 - Not just cycling
 - E.g. School speed zones; active warning signs



2001 New Zealand Cycling Conference

- New Zealand's first cycle lane
 - Installed ca. 1980
 - First cycle signals
 - First colour in bike lane in 2001
- Third NZ Cycling Conference held in Christchurch
 - Made a reality by Cr Denis O'Rourke



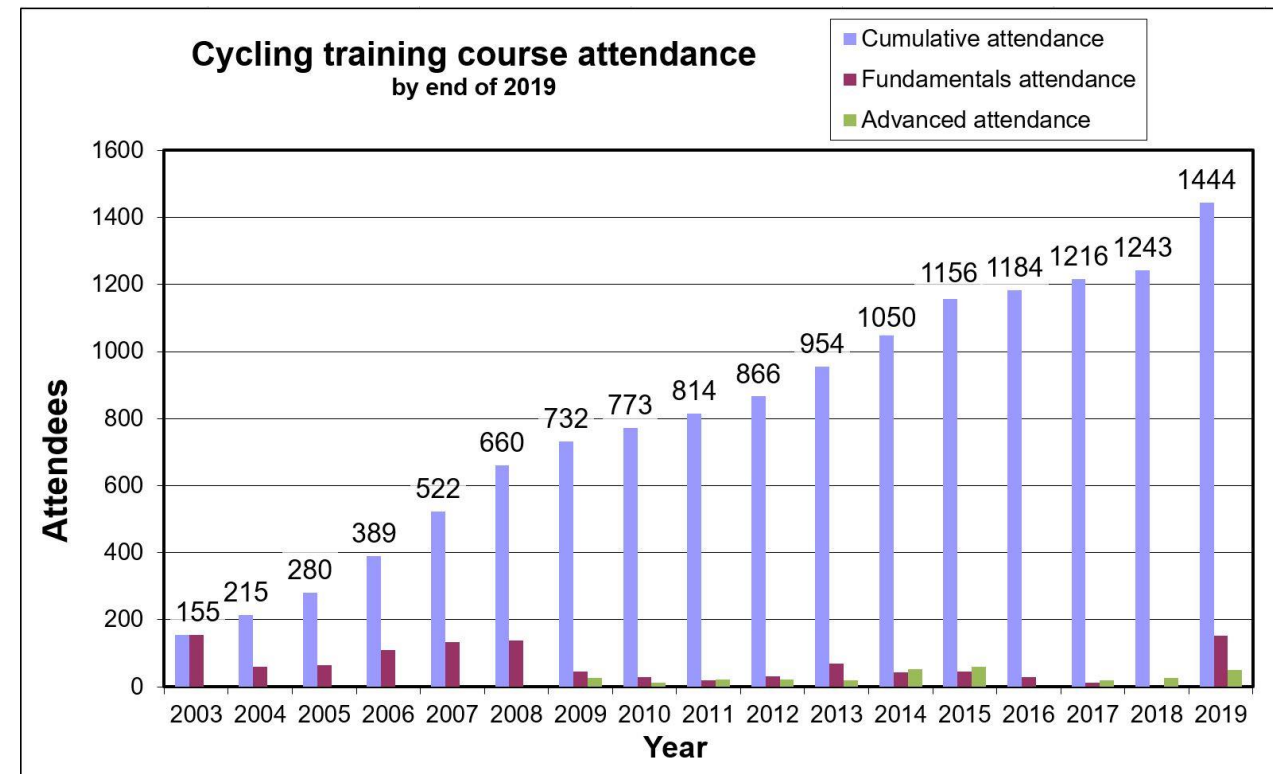


Industry training

- Nobody had ever taught the industry
- Let's have an industry training course!
- Funding from Wellington agencies
 - Transit New Zealand
 - Land Transport NZ
 - Land Transport Safety Authority
- First course in 2003



<https://viastrada.nz/10yrs-cycle-training>



McTurk and Cycleway Moratorium

- Council appointed Lesley McTurk as CEO in 2003
 - Many good brains got sacked
 - Staff lower down the pecking order left
 - “departure lounge”
- Council passed cycleway moratorium in June 2005
 - Cr Bob Shearing pushing for this
 - Using “safety” to push back against loss of parking
- Moratorium lifted in November 2005
 - But nothing much happened for the next 18 months



Lesley McTurk

Spokes

- Cycling advocacy group
 - Founded 1998
 - Successor to Canterbury Cyclists' Association (from 1970s)
- Group became much more influential through moratorium
 - Membership tripled to well over 1000 within weeks
 - Glen Koorey was chair at the time
- Influence via submissions
 - Co-ordinated by Dirk De Lu



Glen Koorey



Dirk De Lu

New Zealand Cycle Trail

- Chain of events led from New Zealand Cycle Trail to funding for Christchurch City
 - 2009 job summit in response to global financial crisis
 - Successful project sponsored by John Key
 - Kevin Hague (Greens) negotiated MOU with Key
 - Hague talked Key into expanding this to an urban equivalent
 - Urban Cycleways Programme (\$333m) in Aug 2014 (\$67m for Christchurch)



John Key



Kevin Hague

Earthquakes and CCC transport strategy

- 2010/11 earthquakes required rethink
- Council developed 2012–2042 transport plan in response
 - With cycling network implemented last, i.e. 2042
- Cr Aaron Keown argued:
 - “do it now or don’t do it at all”
- Adopted in 2013
 - Spend \$69m
 - Build 13 major cycleways
 - Within 5 years



Aaron Keown

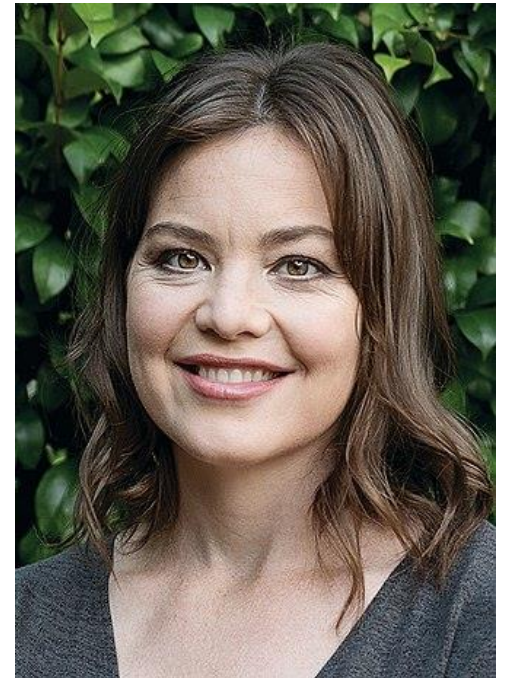
Mobike for Christchurch

- Mobike = bike share scheme
- Cr Aaron Keown is by trade an entertainer
- Test riding a Mobike backwards
 - May 2018



Major Cycle Routes

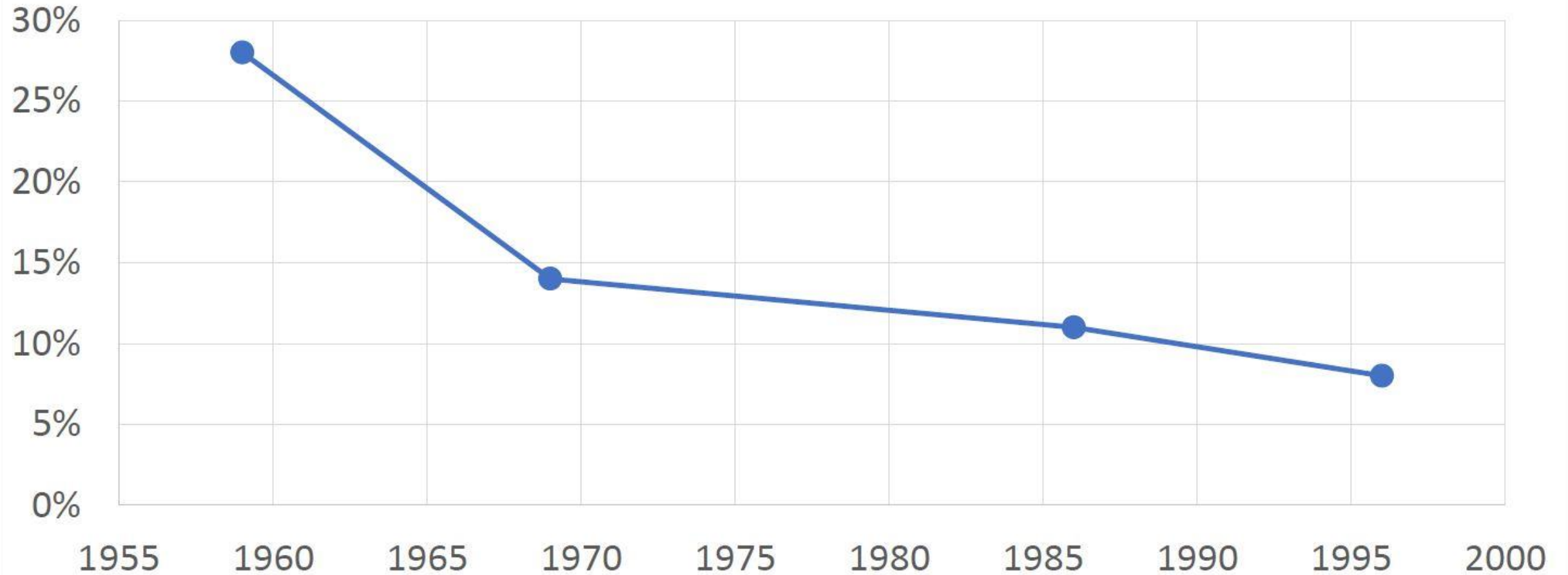
- 2020 stock take
 - 3 routes fully open
 - 4 partially open
 - 2 under construction
 - 3 planned
 - 1 not in planning
- It takes a tad longer than 5 years
- It costs much more than \$69m
 - Govt gave \$125m shovel-ready funding for 2 full and 4 partial projects
- Downside – no funding for connections



Julie Anne Genter

So how have we done? Chch CBD travel

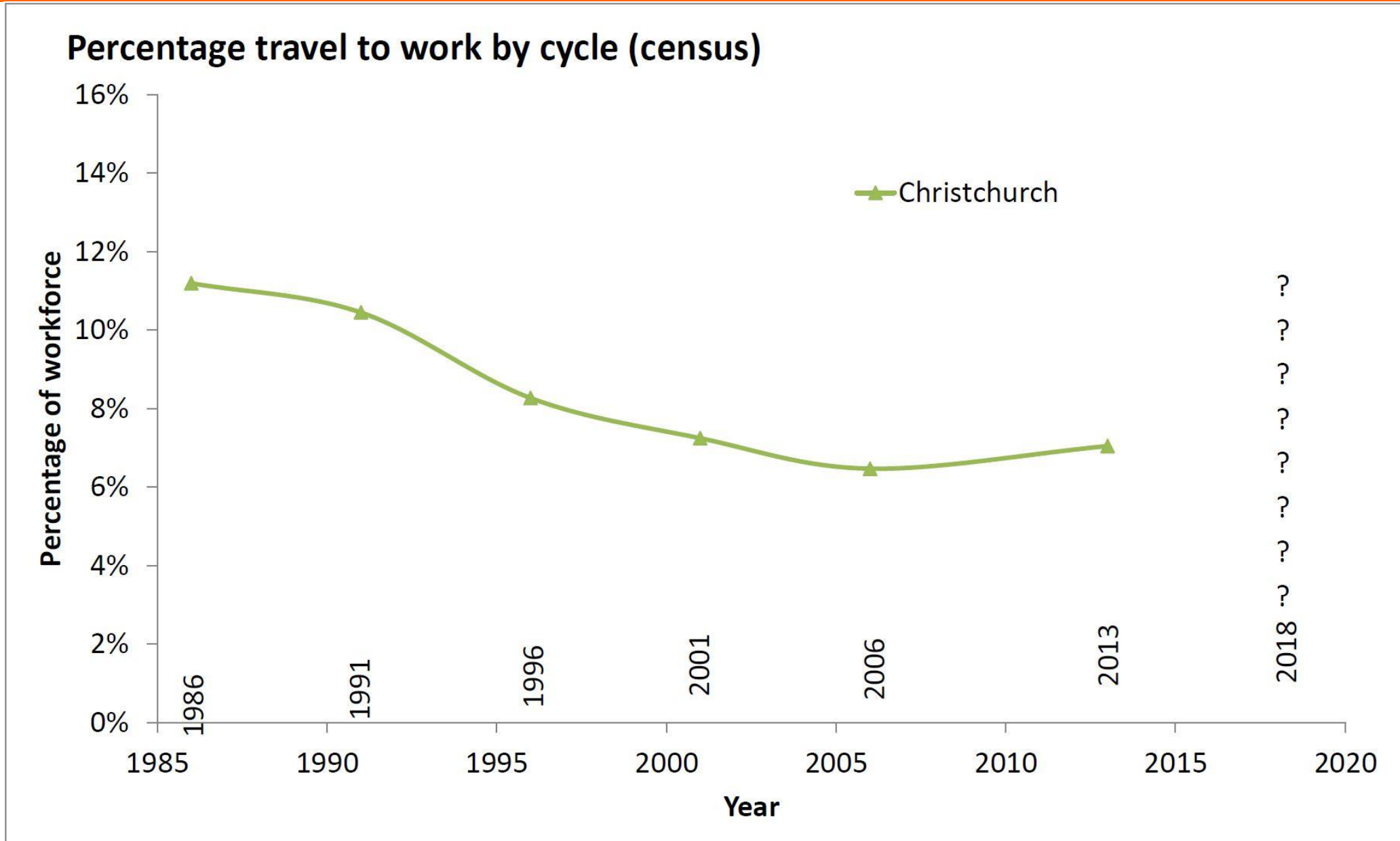
travel to work by cycling – Christchurch central city



1986 Burnside High School

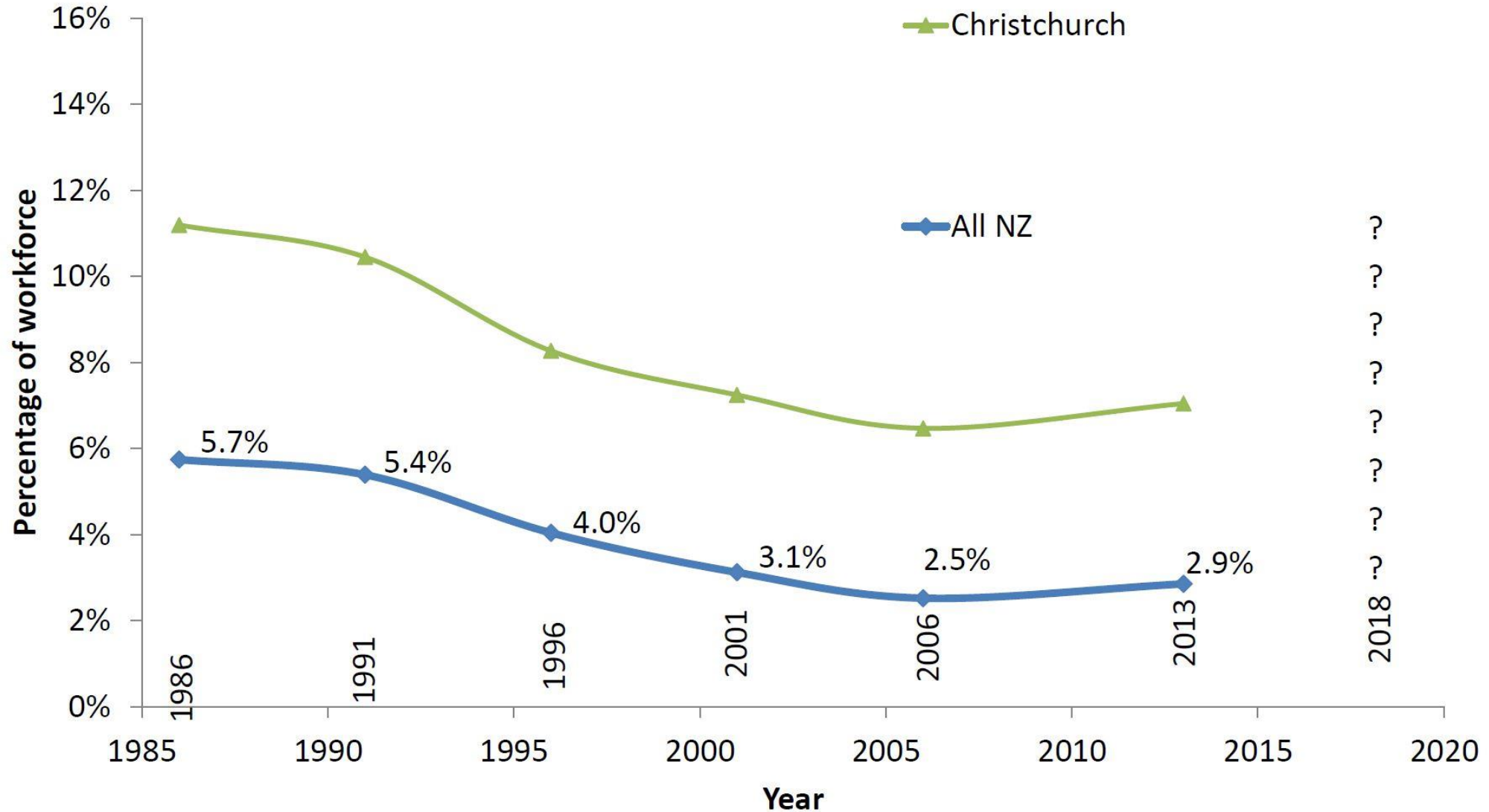


So how have we done? Chch all

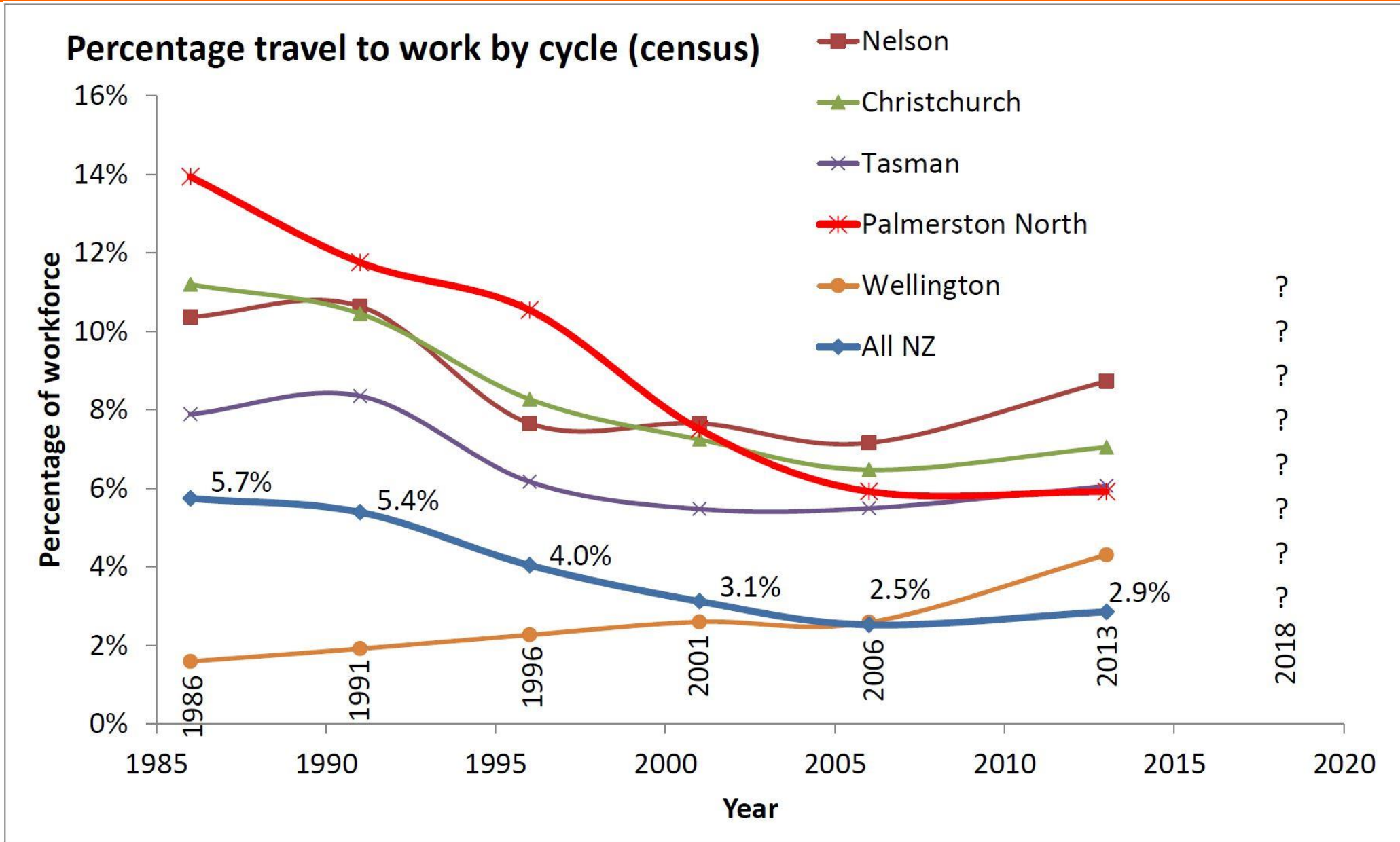


Christchurch vs all NZ

Percentage travel to work by cycle (census)



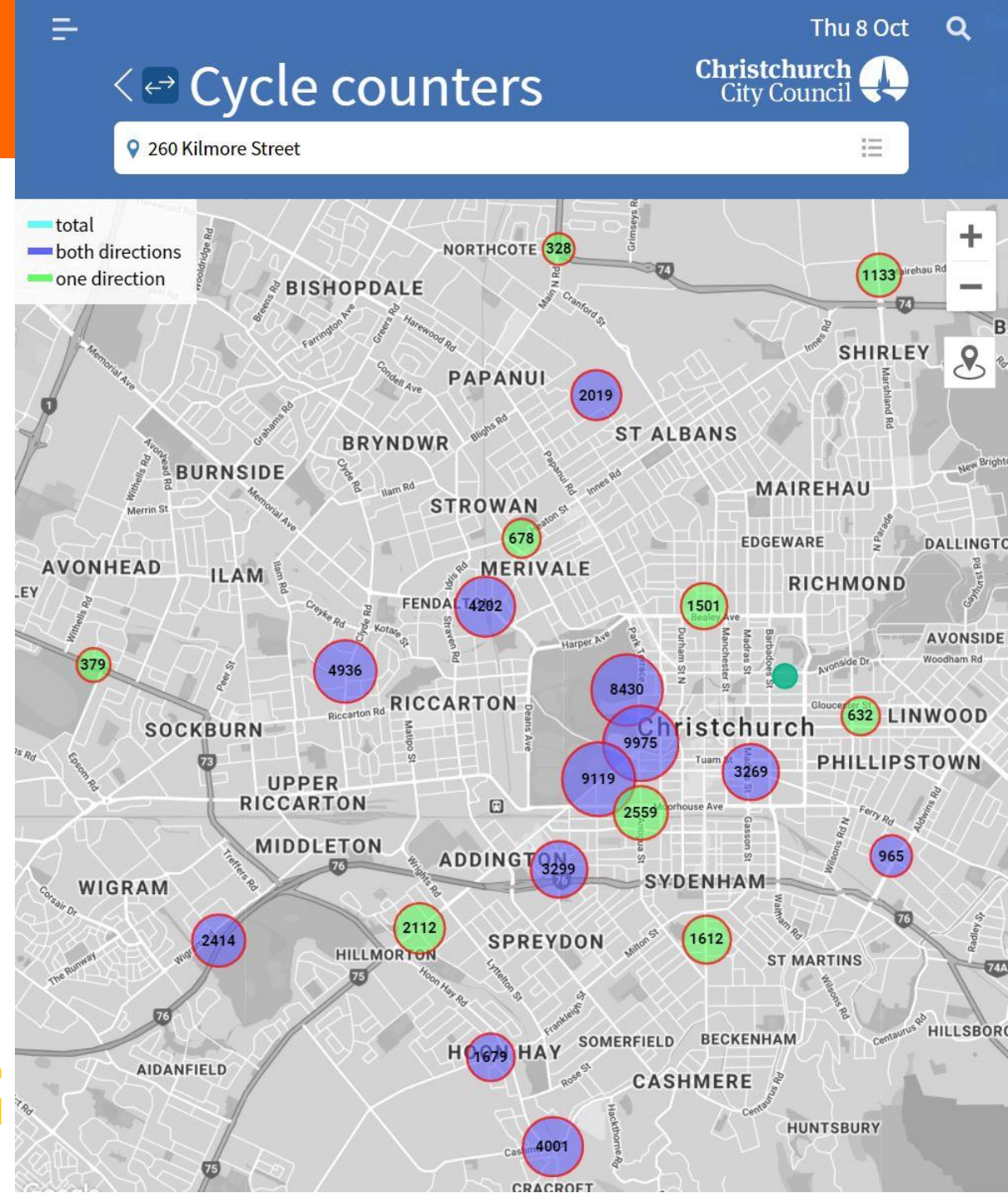
Christchurch vs strong performers



Bicycle counts

- Annual counts started March 2016
- By March 2021, numbers are expected to have doubled
 - i.e. 20% growth per year
- SmartView network of permanent counters

<https://smartview.ccc.govt.nz/map/layer/ecocounter>



Public support?

- Strong public support
 - Despite what the media would want you to believe

| Cycleway | No. Submissions | Support | Opposed |
|---------------------|-----------------|---------|---------|
| South Express | 642 | 72% | 26% |
| Quarrymans Trail | 466 | 91% | 9% |
| Heathcote Express | 170 | 85% | 15% |
| Nor'West Arc | 147 | 84% | 7% |
| Uni-Cycle | 136 | 79% | 10% |
| Rapanui Shag-Rock | 86 | 92% | 8% |
| 2018 LTP: Cycleways | 424 | 67% | 29% |

*Typically people are more likely to submit **against** something...*

Conclusions

- Cycling use lowest in early 2000s
 - Mirroring rest of NZ
 - Recovered since then
 - Strong growth in recent years
- City council building decent infrastructure
 - Needs funding for non-MCR projects
 - National leadership position
- Current political leadership
 - Cr Sara Templeton
 - Cr Mike Davidson



The Honourable CCC Cycleways Committee

THE HONOURABLE C.C.C. CYCLEWAYS COMMITTEE



VICKI
BUCK



PHIL
CLEARWATER



ANDREW
TURNER



MIKE
DAVIDSON



ANNE
GALLOWAY



PAULINE
COTTER



SARA
TEMPLETON

SO VOTE THESE PEOPLE BACK IN

IF YOU WANT TO KEEP LIVING IN A
DICTATORSHIP



Thank you

Axel Downard-Wilke

027 2929 810