

Presentation to the SNUG Workshop
Whangarei, Friday 21 November 2008

Staged Pedestrian Crosswalks at Signalised Cross Intersections

Axel Wilke (presenter)

Megan Fowler

ViaStrada Ltd, Christchurch



www.viastrada.co.nz

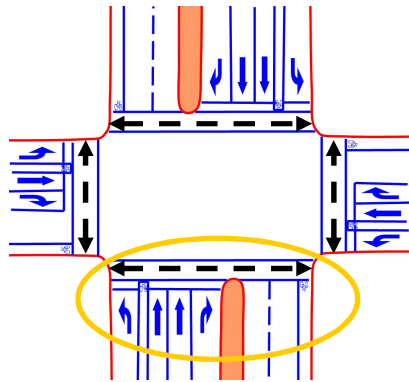
Presentation outline

- Introduction
- Components of staged pedestrian crossings
- Modelling
- Case study
- Phasing example
- Conclusions



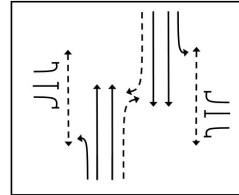
Introduction

- A typical pedestrian crosswalk operation in NZ:

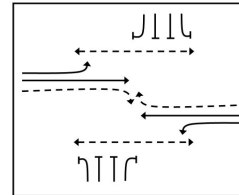


- Multi lane road

A Phase



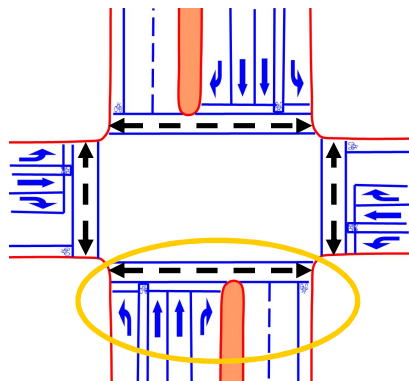
B Phase



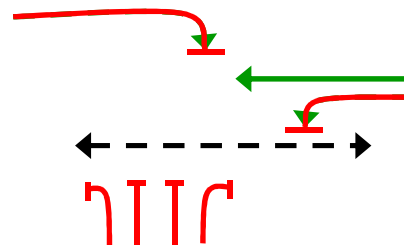
VIASTRADA

Introduction

- A typical pedestrian crosswalk operation in NZ:



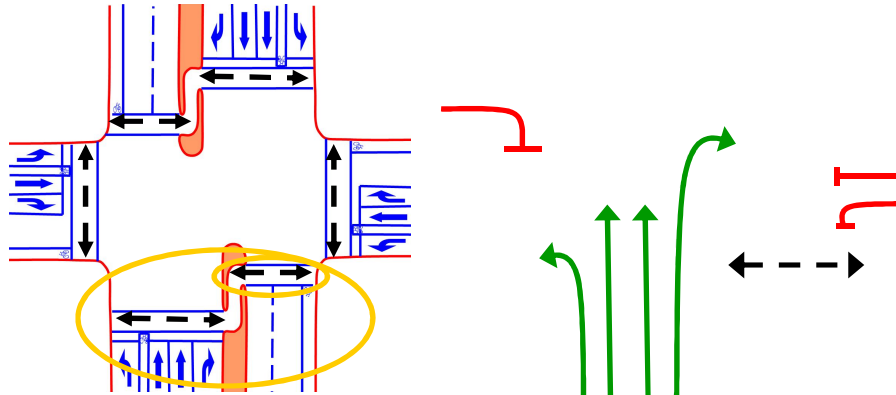
- Allowing filter turning vehicles significantly decreases pedestrian safety
- Pedestrian protection decreases efficiency



VIASTRADA

SPC Concept

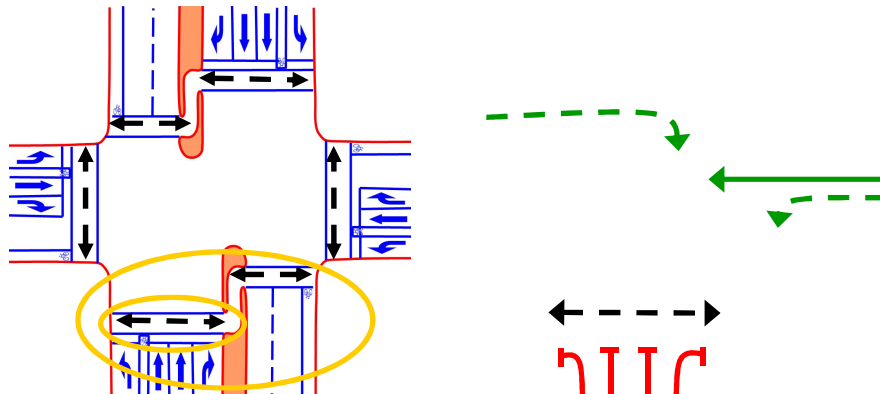
- Why not try a staged pedestrian crossing (SPC)?



VIASTRADA

SPC Concept

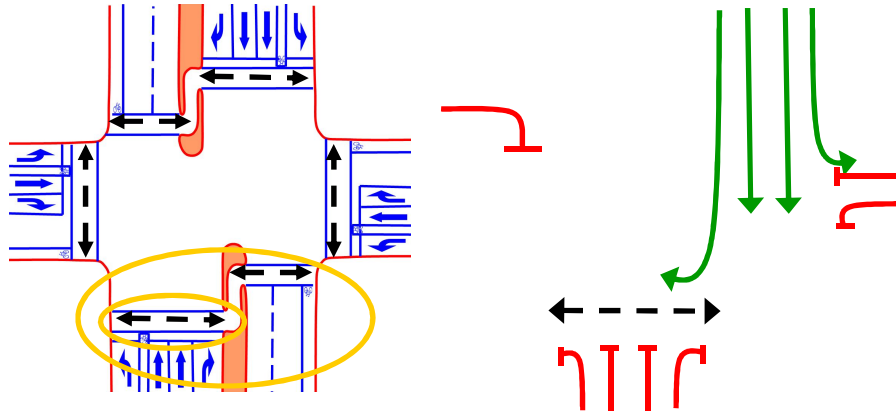
- Why not try a staged pedestrian crossing?



VIASTRADA

SPC Concept

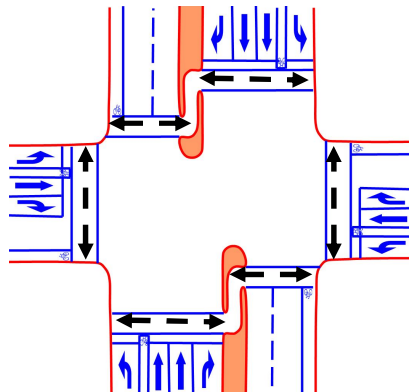
- Why not try a staged pedestrian crossing?



VIASTRADA

SPC Concept

- Why not try a staged pedestrian crossing?

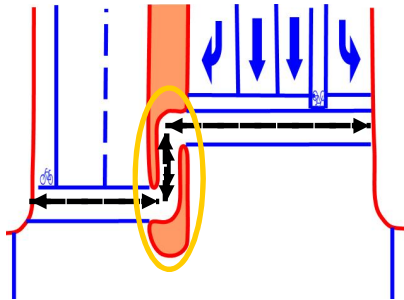


- Separates crossing tasks
- Allows for full (or increased) protection without (necessarily) decreasing motor vehicle efficiency
- Increases pedestrian walking distances (but may decrease waiting time)

VIASTRADA

Components of SPCs

- Refuge island

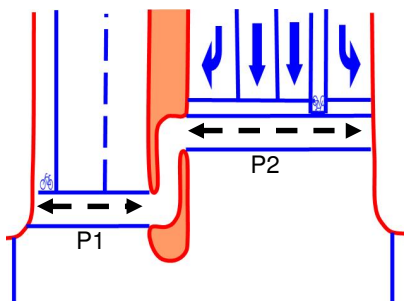


- Staggered
- Stagger ≥ 3 m
- Lefthand stagger preferred
 - ensures peds walk towards opposing traffic

VIASTRADA

Components of SPCs

- Traffic signal phasing

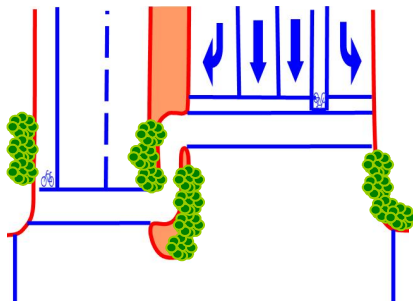


- Operates as two separate crosswalks
- Different phasing possibilities
 - Depending on location of pedestrian demand
 - Depending on turning movement demand

VIASTRADA

Components of SPCs

- Assisting infrastructure



- Signal aspects
- Signage
- Low cover landscaping
- Ped call buttons in median



VIASTRADA

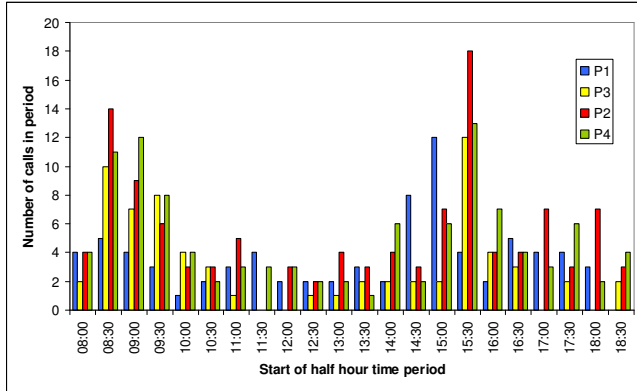
Modelling

- Two ways of modelling pedestrian effects in SIDRA
 - Use pedestrian volume data, or
 - Define late start to conflicting vehicle movement
- Second method is recommended
 - In control of what SIDRA does
- This requires demand and delay data

VIASTRADA

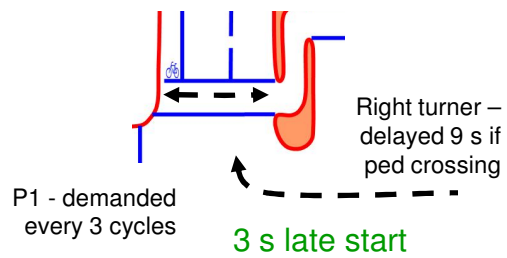
Modelling

- SCATS data
IDM
(intersection diagnostic monitor)



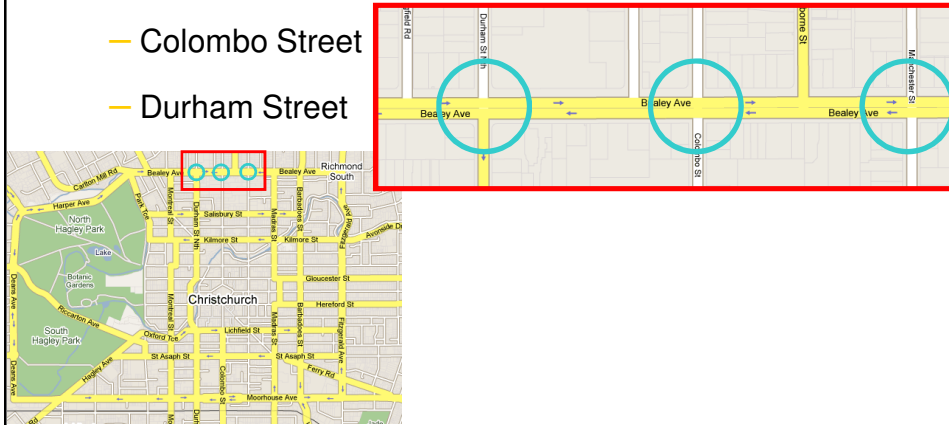
Modelling

- SCATS data
(intersection diagnostic monitor)
- Average demand rates
- Late starts when demanded
- Average late starts



Case study

- Bealey Avenue, Christchurch
 - Manchester Street
 - Colombo Street
 - Durham Street



Case study

- Applying the modelling method:

Side road	Level of Service		Average delay (s/person)		Spare capacity	
	Base	SPC	Base	SPC	Base	SPC
Manchester	D	C	39.0	34.9	-14%	-10%
Colombo	D	D	49.1	45.7	-19%	-18%
Durham am	D	D	51.4	50.4	-10%	-10%
Durham pm	D	C	35.7	33.4	8%	10%

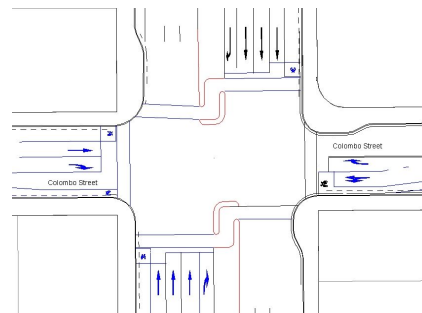
Observations & Question

- Often don't have wide enough median
- Large intersections get high cycle time from length of ped phases
- Would ...
 - Dropping a lane
 - Introduction of wider median and SPC
 - Shorter cycle time
- ... result in better intersection operation?

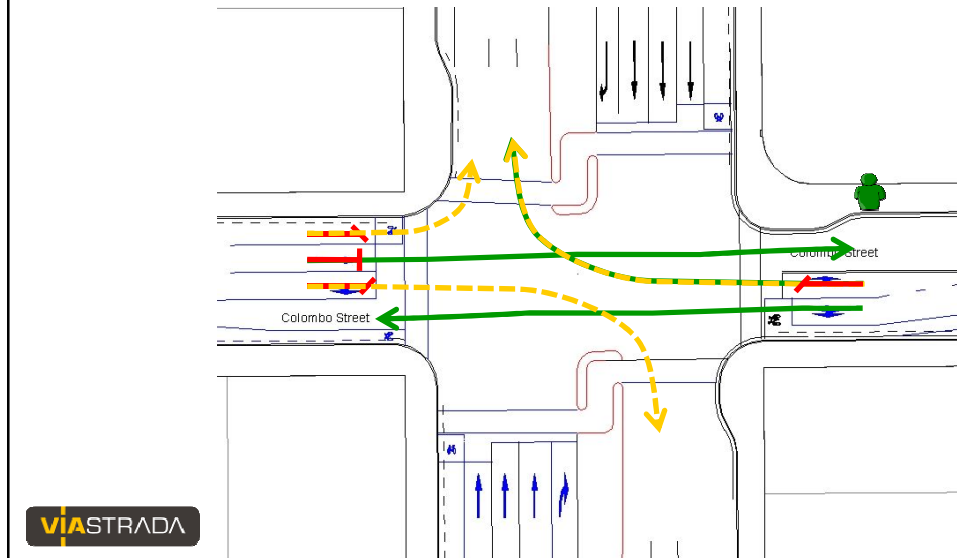


Phasing Design

- Convert simple 2 phase operation to more complex arrangement
- Heavy RTs on Colombo Street (tidal)
- Pedestrian demand is tidal
 - am demand into town



Morning peak phasing

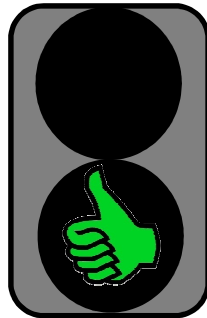


Conclusions

- British experience suggests staged pedestrian crossings will improve safety and quality of pedestrian provision at intersections
- Initial modelling suggests that intersection efficiency can be improved through proper introduction of staged pedestrian crossings
- Great solution for multi lane roads
- Further investigations required
- Let's try it!

Thank you

Questions and discussion



Axel Wilke

Megan Fowler



www.viastrada.co.nz